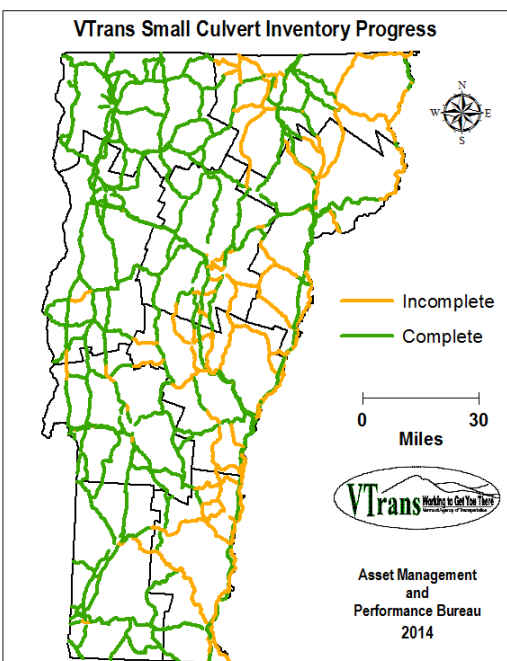
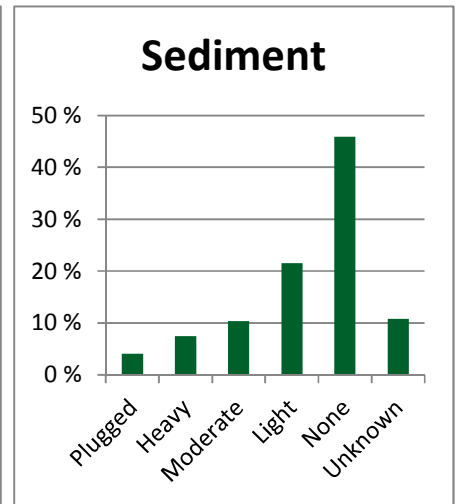
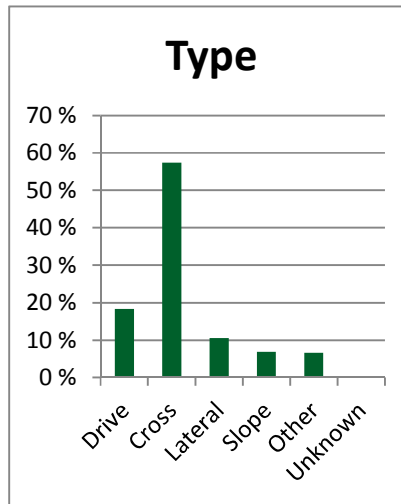
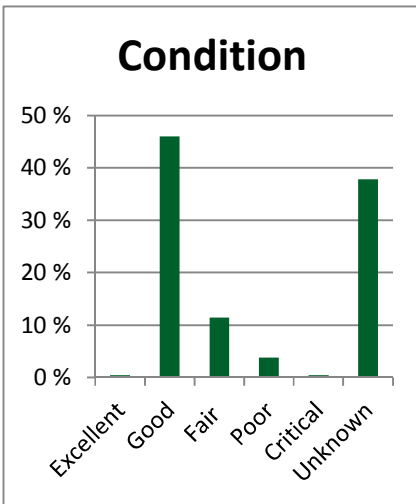
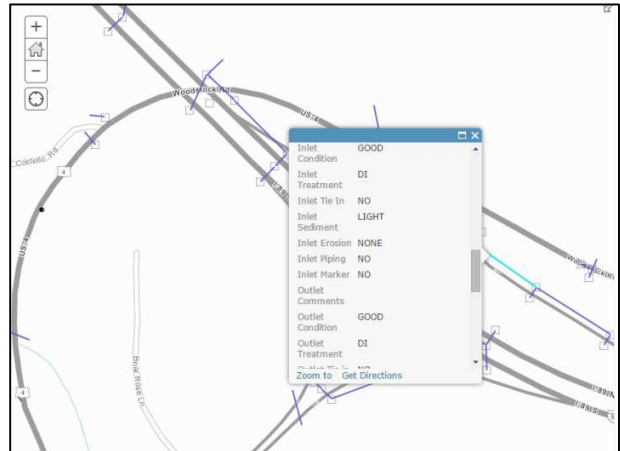


# Small Culvert Inventory



The Agency manages small culvert (less than 6' in diameter) as part of the small culvert inventory. The program was started in 2007 to improve the awareness of culvert conditions across the state. Locations were collected using GPS equipment and a standardized inspection was completed at each asset. To keep the database current, the team has integrated into the maintenance repair process and is working to integrate into the construction process.



Mileage Completed for Inventory – 74%

Culverts Inventoried to Date – 35,000

Drop Inlets Inventoried to Date – 16,000